

DOSING AND ADMINISTRATION

INDICATIONS AND USAGE

AGGRASTAT is indicated to reduce the rate of thrombotic cardiovascular events (combined endpoint of death, myocardial infarction, or refractory ischemia/ repeat cardiac procedure) in patients with non-ST elevation acute coronary syndrome.

CONTRAINDICATIONS

AGGRASTAT is contraindicated in patients with known hypersensitivity to any component of AGGRASTAT; a history of thrombocytopenia following prior exposure to AGGRASTAT; active internal bleeding, or a history of bleeding diathesis; major surgical procedure or severe physical trauma within the previous month.

RECOMMENDED DOSING & ADMINISTRATION

Administer intravenously 25 mcg/kg within 5 minutes and then 0.15 mcg/kg/min for up to 18 hours. In patients with creatinine clearance ≤ 60 mL/min, give 25 mcg/kg within 5 minutes followed by an infusion of 0.075 mcg/kg/min for up to 18 hours. For patients ≥ 167 kg, it is recommended that the bolus dose be administered via syringe from the 15 mL premixed bolus vial, to ensure that delivery time does not exceed 5 minutes.

MECHANISM OF ACTION

AGGRASTAT HDB (high-dose bolus) regimen achieves $>90\%$ inhibition of platelet aggregation within 10 minutes. Platelet inhibition is reversible following cessation of the infusion. AGGRASTAT is primarily cleared renally with a plasma half-life of ~ 2 hours.

USING 100 ML VIAL OR 250 ML BAG (50 MCG/ML UNITS)



1

BOLUS

Using 50 mcg/mL Units

25 mcg/kg within 5 minutes

2

INFUSION

Using 50 mcg/mL Units

CrCl >60 mL/min: 0.15 mcg/kg/min
CrCl ≤ 60 mL/min: 0.075 mcg/kg/min

Weight (lb)	Weight (kg)	Using 50 mcg/mL Units	Volume (mL)	Rate (mL/hr)	CrCl* >60 mL/min Rate (mL/hr)	CrCl* ≤ 60 mL/min Rate (mL/hr)
66 - 82	30 - 37		17	999	6	3
83 - 100	38 - 45		21	999	7.5	3.75
101 - 119	46 - 54		25	999	9	4.5
120 - 137	55 - 62		29	999	10.5	5.25
138 - 155	63 - 70		33	999	12	6
156 - 174	71 - 79		37.5	999	13.5	6.75
175 - 192	80 - 87		42	999	15	7.5
193 - 210	88 - 95		46	999	16.5	8.25
211 - 229	96 - 104		50	999	18	9
230 - 247	105 - 112		54	999	19.5	9.75
248 - 265	113 - 120		58	999	21	10.5
266 - 283	121 - 128		62	999	22.5	11.25
284 - 302	129 - 137	66.5	999	24	12	
303 - 319	138 - 145	71	999	25.5	12.75	
320 - 337	146 - 153	75	999	27	13.5	

Please note: This chart is not intended for bolus administration using the 250 mcg/mL bolus vial.

AGGRASTAT is to be initiated with heparin.

CrCl* = creatinine clearance. Creatinine clearance can be calculated by gender using actual body weight in the Cockcroft-Gault formula. Please see reverse for equations.

The above dosing chart provides dosing in weight ranges and is only meant as a guide. For dosing by exact patient weight, please refer to the reverse page for dosing formulas.

1

Using the 100 mL vial or 250 mL bag (both 50 mcg/mL), administer the bolus dose of AGGRASTAT within 5 minutes via IV pump.

2

Immediately following the bolus dose administration, administer the maintenance infusion of AGGRASTAT from the same 100 mL vial or 250 mL bag via IV pump.

PRODUCT DETAILS

AGGRASTAT is supplied in three formats: 15 mL Bolus Vial (250 mcg/mL), 100 mL Vial (50 mcg/mL) and 250 mL Bag (50 mcg/mL). AGGRASTAT injection is a clear, non-preserved, sterile solution pre-mixed in a vehicle made iso-osmotic with sodium chloride. The shelf life of AGGRASTAT is 36 months. No refrigeration required. Do not freeze. Protect from light during storage.

CLINICAL EXPERIENCE

In clinical studies with the HDB regimen, AGGRASTAT was administered in combination with aspirin, clopidogrel and heparin or bivalirudin to over 8,000 patients for typically ≤ 24 hours.

Medical Information: 1-800-509-0544 or medical.information@medtronic.com

Please see reverse for dosing formulas and accompanying full prescribing information.

AGGRASTAT[®]

(tirofiban hydrochloride) Injection

GUIDELINES

AGGRASTAT is recommended in the ACC/AHA Guidelines for NSTEMI-ACS¹ and the ACC/AHA/SCAI Guideline for PCI².

INSTRUCTIONS FOR 100 ML VIAL

Ensure seal is intact. Remove vial cap. Place vial on a flat surface, insert a vented IV set and open the vent. Hang bottle by plastic hanger and adjust flow for appropriate dosing.

INSTRUCTIONS FOR 250 ML BAG

To open, tear off foil overpouch. Plastic may be opaque due to moisture absorption during sterilization, but will diminish gradually. Check for leaks by squeezing the inner bag firmly. Discard if any leaks are found or the sterility is suspect. Do not use unless solution is clear and seal is intact.

ADMINISTRATION CONSIDERATIONS

For intravenous use only. Parenteral drug products should be visually inspected for particulate matter and discoloration prior to administration whenever solution and container permit. For administration using the 100 mL vial, ensure a vented IV set is used. Discard any unused portion left in the vial or bag.

DRUG COMPATIBILITIES

AGGRASTAT can be administered in the same intravenous line as heparin, atropine sulfate, dobutamine, dopamine, epinephrine hydrochloride (HCl), famotidine injection, furosemide, lidocaine, midazolam HCl, morphine sulfate, nitroglycerin, potassium chloride, and propranolol HCl. **Do not administer AGGRASTAT through the same IV line as diazepam. Do not add other drugs or remove solution directly from 100 mL vial or 250 mL bag with a syringe.**

RENAL INSUFFICIENCY

Dose adjustment is required for patients with severe renal insufficiency (creatinine clearance ≤ 60 mL/min). Reduce the maintenance infusion of AGGRASTAT to 0.075 mcg/kg/min for up to 18 hours. The bolus dose is not adjusted. Creatinine clearance can be calculated using actual body weight in the Cockcroft-Gault equations below:

Males:

$$\text{CrCl} = \frac{(140 - \text{age}) \times (\text{actual body weight in kg})}{72 \times (\text{serum creatinine (mg/dL)})}$$

Females:

$$\text{CrCl} = \frac{(140 - \text{age}) \times (\text{actual body weight in kg})}{72 \times (\text{serum creatinine (mg/dL)})} \times 0.85$$

AGGRASTAT is removed by hemodialysis[†].

WARNINGS AND PRECAUTIONS

General Risk of Bleeding: Bleeding is the most common complication. Most bleeding occurs at the arterial access site for cardiac catheterization. Minimize the use of traumatic or potentially traumatic procedures such as arterial and venous punctures, intramuscular injections, nasotracheal intubation, etc. Concomitant use of fibrinolytics, anticoagulants and antiplatelet drugs increases the risk of bleeding.

Thrombocytopenia: Monitor platelet counts beginning ~6 hours after treatment initiation and daily thereafter. If platelet count decreases to $<90,000/\text{mm}^3$, monitor platelet counts to exclude pseudothrombocytopenia. If thrombocytopenia is confirmed, discontinue AGGRASTAT and heparin. Previous exposure to a glycoprotein IIb/IIIa inhibitor may increase risk of developing thrombocytopenia.

ADVERSE REACTIONS

Bleeding is the most commonly reported adverse reaction.

CARE OF THE FEMORAL ARTERY ACCESS SITE

Prior to pulling the femoral sheath, discontinue heparin for 3-4 hours. Ensure activated clotting time (ACT) <180 seconds or activated partial thromboplastin time (APTT) <45 seconds is achieved². Use standard compressive techniques to obtain proper hemostasis after sheath removal.

DOSING FORMULAS - USING 100 ML VIAL OR 250 ML BAG (50 MCG/ML UNITS)

Bolus Volume (mL)

All patients

$$= \frac{25 \text{ mcg/kg} \times \text{body weight (kg)}}{50 \text{ mcg/mL}}$$

Infusion Rate (mL/h)

Patients with CrCl >60 mL/min

$$= \frac{0.15 \text{ mcg/kg/min} \times \text{body weight (kg)} \times 60 \text{ min/h}}{50 \text{ mcg/mL}}$$

Infusion Rate (mL/h)

Patients with CrCl ≤ 60 mL/min

$$= \frac{0.075 \text{ mcg/kg/min} \times \text{body weight (kg)} \times 60 \text{ min/h}}{50 \text{ mcg/mL}}$$

For more information, call 1-800-509-0544, email medical.information@medicure.com or visit aggrastatHDB.com.

To report SUSPECTED ADVERSE REACTIONS, contact Medicure at 1-800-509-0544 or FDA at 1-800-FDA-1088 or www.fda.gov/medwatch

[†]Safety and efficacy of AGGRASTAT has not been established in patients on hemodialysis.

1. Amsterdam EA et al. J Am Coll Cardiol 2014;64:2645-2687 2. Levine GN et al. J Am Coll Cardiol 2011;58:e44-e122

HIGHLIGHTS OF PRESCRIBING INFORMATION

These highlights do not include all the information needed to use AGGRASTAT® (tirofiban hydrochloride) safely and effectively. See full prescribing information for AGGRASTAT.

AGGRASTAT (tirofiban hydrochloride) injection, for intravenous use
Initial U.S. Approval: 1998

INDICATIONS AND USAGE

AGGRASTAT is a platelet aggregation inhibitor indicated to reduce the rate of thrombotic cardiovascular events (combined endpoint of death, myocardial infarction, or refractory ischemia/repeat cardiac procedure) in patients with non-ST elevation acute coronary syndrome (NSTEMI-ACS). (1)

DOSAGE AND ADMINISTRATION

- Administer intravenously 25 mcg/kg within 5 minutes and then 0.15 mcg/kg/min for up to 18 hours. In patients with creatinine clearance \leq 60 mL/min, give 25 mcg/kg within 5 minutes and then 0.075 mcg/kg/min. (2)

DOSAGE FORMS AND STRENGTHS

- Injection: 12.5 mg/250mL (50 mcg/mL) in 250 mL bag. (3)
- Injection: 5 mg/100mL (50 mcg/mL) in 100 mL bag. (3)
- Injection: 5 mg/100mL (50 mcg/mL) in 100 mL vial. (3)
- Injection: 3.75 mg/15mL (250 mcg/mL) in 15 mL bolus vial. (3)

CONTRAINDICATIONS

- Known hypersensitivity to any component of AGGRASTAT. (4)
- History of thrombocytopenia with prior exposure to AGGRASTAT. (4)
- Active internal bleeding, or history of bleeding diathesis, major surgical procedure or severe physical trauma within the previous month. (4)

WARNINGS AND PRECAUTIONS

- AGGRASTAT can cause serious bleeding. If bleeding cannot be controlled discontinue AGGRASTAT. (5.1)
- Thrombocytopenia: Discontinue AGGRASTAT and heparin. (5.2)

ADVERSE REACTIONS

Bleeding is the most commonly reported adverse reaction. (6.1)

To report SUSPECTED ADVERSE REACTIONS, contact Medicare at 1-800-509-0544 or FDA at 1-800-FDA-1088 or www.fda.gov/medwatch.

DRUG INTERACTIONS

- Coadministration of fibrinolytics, anticoagulants and antiplatelet agents, increases the risk of bleeding. (7)

USE IN SPECIFIC POPULATIONS

- Renal Insufficiency: Reduce the dose in patients with severe renal insufficiency. (8.6)

See 17 for PATIENT COUNSELING INFORMATION

Revised: 12/2020

FULL PRESCRIBING INFORMATION: CONTENTS*

1	INDICATIONS AND USAGE
2	DOSAGE AND ADMINISTRATION
2.1	Recommended Dosage
2.2	Administration
2.3	Dose Adjustment for Renal Impairment
3	DOSAGE FORMS AND STRENGTHS
4	CONTRAINDICATIONS
5	WARNINGS AND PRECAUTIONS
5.1	General Risk of Bleeding
5.2	Thrombocytopenia
6	ADVERSE REACTIONS
6.1	Clinical Trial Experience
6.2	Post-Marketing Experience
7	DRUG INTERACTIONS
8	USE IN SPECIFIC POPULATIONS
8.1	Pregnancy
8.2	Lactation
8.4	Pediatric Use
8.5	Geriatric Use
8.6	Renal Insufficiency

10	OVERDOSAGE
11	DESCRIPTION
12	CLINICAL PHARMACOLOGY
12.1	Mechanism of Action
12.2	Pharmacodynamics
12.3	Pharmacokinetics
13	NONCLINICAL TOXICOLOGY
13.1	Carcinogenesis, Mutagenesis, Impairment of Fertility
14	CLINICAL STUDIES
16	HOW SUPPLIED/STORAGE AND HANDLING
17	PATIENT COUNSELING INFORMATION

*Sections or subsections omitted from the full prescribing information are not listed.

FULL PRESCRIBING INFORMATION

1 INDICATIONS AND USAGE

AGGRASTAT® is indicated to reduce the rate of thrombotic cardiovascular events (combined endpoint of death, myocardial infarction, or refractory ischemia/repeat cardiac procedure) in patients with non-ST elevation acute coronary syndrome (NSTEMI-ACS).

2 DOSAGE AND ADMINISTRATION

2.1 Recommended Dosage

The recommended dosage is 25 mcg/kg administered intravenously within 5 minutes and then 0.15 mcg/kg/min for up to 18 hours.

2.2 Administration

For intravenous use only. Parenteral drug products should be inspected visually for particulate matter and discoloration prior to administration whenever solution and container permit.

To open the 100 mL or 250 mL premixed bag, first tear off its foil overpouch. The plastic may be somewhat opaque because of moisture absorption during sterilization; the opacity will diminish gradually. Check for leaks by squeezing the inner bag firmly; if any leaks are found or sterility is suspect then the solution should be discarded. Do not use unless the solution is clear and the seal is intact.

Administration Instructions

1. Withdraw the bolus dose of AGGRASTAT from the 15 mL premixed bolus vial into a syringe. Alternatively, the bolus dose of AGGRASTAT may be administered from the 100 mL premixed vial or from the 100 mL or 250 mL premixed bag. Do not dilute. Administer the bolus dose within 5 minutes via a syringe or IV pump. For patients ≥ 167 kg, it is recommended that the bolus dose be administered via syringe from the 15 mL premixed bolus vial, to ensure that delivery time does not exceed 5 minutes.
2. Immediately following the bolus dose administration, administer the maintenance infusion from the 100 mL premixed vial, the 100 mL premixed bag or the 250 mL premixed bag via an IV pump.
3. Discard any unused portion left in the vial or bag.

The recommended bolus volume using the 15 mL premixed bolus vial can be calculated using the following equation:

$$\text{Bolus Volume (mL)} = \frac{25 \text{ mcg/kg} \times \text{body weight (kg)}}{250 \text{ mcg/mL}}$$

The recommended bolus volume using the 100 mL premixed vial, 100 mL premixed bag or 250 mL premixed bag can be calculated using the following equation:

$$\text{Bolus Volume (mL)} = \frac{25 \text{ mcg/kg} \times \text{body weight (kg)}}{50 \text{ mcg/mL}}$$

The recommended infusion rate for patients with CrCl (Creatinine Clearance) > 60 mL/min using the 100 mL premixed vial, 100 mL premixed bag or 250 mL premixed bag can be calculated using the following equation:

$$\text{Infusion Rate for CrCl} > 60 \text{ mL/min (mL/h)} = \frac{0.15 \text{ mcg/kg/min} \times \text{body weight (kg)} \times 60 \text{ min/h}}{50 \text{ mcg/mL}}$$

Example calculation of infusion rate for 60 kg patient with CrCl > 60 mL/min using the 100 mL premixed vial, 100 mL premixed bag or 250 mL premixed bag:

$$\text{Infusion Rate for CrCl} > 60 \text{ mL/min (mL/h)} = \frac{0.15 \text{ mcg/kg/min} \times 60 \text{ kg} \times 60 \text{ min/h}}{50 \text{ mcg/mL}} = 10.8 \text{ mL/h}$$

Drug Compatibilities

AGGRASTAT can be administered in the same intravenous line as heparin, atropine sulfate, dobutamine, dopamine, epinephrine hydrochloride (HCl), famotidine injection, furosemide, lidocaine, midazolam HCl, morphine sulfate, nitroglycerin, potassium chloride, and propranolol HCl. Do not administer AGGRASTAT through the same IV line as diazepam. Do not add other drugs or remove solution directly from the bag with a syringe.

2.3 Dose Adjustment for Renal Impairment

The recommended dosage in patients with CrCl ≤ 60 mL/min (calculated using the Cockcroft-Gault equation with actual body weight)

is 25 mcg/kg intravenously within 5 minutes and then 0.075 mcg/kg/min, for up to 18 hours.

The recommended infusion rate for patients with CrCl ≤ 60 mL/min using the 100 mL premixed vial, 100 mL premixed bag or 250 mL premixed bag can be calculated using the following equation:

$$\text{Infusion Rate for CrCl} \leq 60 \text{ mL/min (mL/h)} = \frac{0.075 \text{ mcg/kg/min} \times \text{body weight (kg)} \times 60 \text{ min/h}}{50 \text{ mcg/mL}}$$

3 DOSAGE FORMS AND STRENGTHS

AGGRASTAT is a clear, non-preserved, colorless, isosmotic, sterile premixed injection with sodium chloride for tonicity adjustment available in the following presentations:

Table 1 AGGRASTAT Strength and Packaging

Strength	Volume – Packaging
50 mcg/mL	250 mL – bag
50 mcg/mL	100 mL – bag
50 mcg/mL	100 mL – vial
250 mcg/mL	15 mL – bolus vial

4 CONTRAINDICATIONS

AGGRASTAT is contraindicated in patients with:

- Severe hypersensitivity reaction to AGGRASTAT (i.e., anaphylactic reactions) [see *Adverse Reactions (6.2)*].
- A history of thrombocytopenia following prior exposure to AGGRASTAT [see *Adverse Reactions (6.1)*].
- Active internal bleeding or a history of bleeding diathesis, major surgical procedure or severe physical trauma within the previous month [see *Adverse Reactions (6.1)*].

5 WARNINGS AND PRECAUTIONS

5.1 General Risk of Bleeding

Bleeding is the most common complication encountered during therapy with AGGRASTAT. Most bleeding associated with AGGRASTAT occurs at the arterial access site for cardiac catheterization. Minimize the use of traumatic or potentially traumatic procedures such as arterial and venous punctures, intramuscular injections, nasotracheal intubation, etc.

Concomitant use of fibrinolytics, anticoagulants and antiplatelet drugs increases the risk of bleeding.

5.2 Thrombocytopenia

Profound thrombocytopenia has been reported with AGGRASTAT. Monitor platelet counts beginning about 6 hours after treatment initiation and daily thereafter. If the platelet count decreases to < 90,000/mm³, monitor platelet counts to exclude pseudothrombocytopenia. If thrombocytopenia is confirmed, discontinue AGGRASTAT and heparin. Previous exposure to a glycoprotein (GP) IIb/IIIa receptor antagonist may increase the risk of developing thrombocytopenia [see *Adverse Reactions (6.1)*].

6 ADVERSE REACTIONS

6.1 Clinical Trial Experience

Because clinical trials are conducted under widely varying conditions, adverse reaction rates observed in the clinical trials of a drug cannot be directly compared to rates in the clinical trials of another drug and may not reflect the rates observed in clinical practice.

In the PRISM (Platelet Receptor Inhibition for Ischemic Syndrome Management), PRISM-PLUS (Platelet Receptor Inhibition for Ischemic Syndrome Management — Patients Limited by Unstable Signs and Symptoms) and RESTORE (Randomized Efficacy Study of Tirofiban for Outcomes and Restenosis) trials, 1946 patients received AGGRASTAT in combination with heparin and 2002 patients received AGGRASTAT alone for about 3 days. Forty-three percent of the population was > 65 years of age and approximately 30% of patients were female. In clinical studies with the recommended regimen (25 mcg/kg bolus followed by a 0.15 mcg/kg/min maintenance infusion), AGGRASTAT was administered in combination with aspirin, clopidogrel and heparin or bivalirudin to over 8000 patients for typically ≤ 24 hours. Approximately 30% of the population was > 65 years of age and approximately 25% were female.

Bleeding

PRISM-PLUS Regimen

The incidences of major and minor bleeding using the TIMI criteria in the PRISM-PLUS study are shown below.

Table 2 TIMI Major and Minor Bleeding in PRISM-PLUS

Bleeding (TIMI Criteria) ‡ §	PRISM-PLUS (NSTE-ACS)	
	AGGRASTAT* + Heparin (N=773)	Heparin alone (N=797)
Major Bleeding	1.4%	0.8%
Minor Bleeding	10.5%	8.0%
Transfusions	4.0%	2.8%

* 0.4 mcg/kg/min initial infusion; 0.10 mcg/kg/min maintenance infusion.

‡ Major = Hemoglobin drop of > 5.0 g/dL with or without an identified site, intracranial hemorrhage, or cardiac tamponade.

§ Minor = Hemoglobin drop of > 3.0 g/dL with bleeding from a known site, spontaneous gross hematuria, hematemesis or hemoptysis.

The incidence rates of TIMI major bleeding in patients undergoing percutaneous procedures in PRISM-PLUS are shown below.

Table 3 TIMI Major Bleeding Associated with Percutaneous Procedures in PRISM-PLUS

	AGGRASTAT + Heparin		Heparin alone	
	N	%	N	%
Prior to Procedures	773	0.3	797	0.1
Following Angiography	697	1.3	708	0.7
Following PTCA	239	2.5	236	2.2

The incidence rates of TIMI major bleeding in patients undergoing coronary artery bypass graft surgery (CABG) in PRISM-PLUS within one day of discontinuation of AGGRASTAT were 17% on AGGRASTAT plus heparin (N=29) and 35% on heparin alone (N=31).

Recommended (“High-Dose Bolus”) Regimen

Rates of major bleeds (including any intracranial, intraocular or retroperitoneal hemorrhage, clinically overt signs of hemorrhage associated with a drop in hemoglobin of > 3 g/dL or any drop in hemoglobin by 4 g/dL, bleeding requiring transfusion of ≥ 2 U blood products, bleeding directly resulting in death within 7 days or hemodynamic compromise requiring intervention) were consistent with the rates observed in subjects administered the PRISM-PLUS regimen of AGGRASTAT. There was a trend toward greater bleeding in ST segment elevation myocardial infarction (STEMI) patients treated with fibrinolytics prior to administration of AGGRASTAT using the recommended regimen during rescue PCI.

Non-Bleeding

The incidences of non-bleeding adverse events that occurred at an incidence of > 1% and numerically higher than control, regardless of drug relationship, are shown below:

Table 4 Non-bleeding Adverse Reactions in PRISM-PLUS

	AGGRASTAT + Heparin (N=1953)%	Heparin alone (N=1887)%
<i>Body as a Whole</i>		
Edema/swelling	2	1
Pain, pelvic	6	5
Reaction, vasovagal	2	1
<i>Cardiovascular System</i>		
Bradycardia	4	3
Dissection, coronary artery	5	4
<i>Musculoskeletal System</i>		
Pain, leg	3	2
<i>Nervous System/Psychiatric</i>		
Dizziness	3	2
<i>Skin and Skin Appendage</i>		
Sweating	2	1

Thrombocytopenia

Patients treated with AGGRASTAT plus heparin, were more likely to experience decreases in platelet counts than were those on heparin alone. These decreases were reversible upon discontinuation of AGGRASTAT. The percentage of patients with a decrease of platelets to $< 90,000/\text{mm}^3$ was 1.5%, compared with 0.6% in the patients who received heparin alone. The percentage of patients with a decrease of platelets to $< 50,000/\text{mm}^3$ was 0.3%, compared with 0.1% of the patients who received heparin alone.

6.2 Post-Marketing Experience

The following additional adverse reactions have been identified during post-approval use of AGGRASTAT. Because these reactions are reported voluntarily from a population of uncertain size, it is not always possible to reliably estimate their frequency or establish a causal relationship to the drug exposure.

Hypersensitivity: Severe allergic reactions including anaphylactic reactions have occurred during the first day of AGGRASTAT infusion, during initial treatment, and during readministration of AGGRASTAT. Some cases have been associated with severe thrombocytopenia (platelet counts $< 10,000/\text{mm}^3$). No information is available on the formation of antibodies to tirofiban.

7 DRUG INTERACTIONS

Concomitant use of fibrinolytics, anticoagulants and antiplatelet drugs increases the risk of bleeding.

8 USE IN SPECIFIC POPULATIONS

8.1 Pregnancy

Risk Summary

While published data cannot definitively establish the absence of risk, available published case reports have not established an association with tirofiban use during pregnancy and major birth defects, miscarriage, or adverse maternal or fetal outcomes. Untreated myocardial infarction can be fatal to the pregnant woman and fetus (see Clinical Considerations). Studies with tirofiban HCl at intravenous doses up to 5 mg/kg/day (about 5 and 13 times the maximum recommended daily human dose for rat and rabbit, respectively, when compared on a body surface area basis) have revealed no harm to the fetus.

The estimated background risk of major birth defects and miscarriage for the indicated population is unknown. All pregnancies have a background risk of birth defect, loss, or other adverse outcomes. In the U.S. general population, the estimated background risk of major birth defects and miscarriage in clinically recognized pregnancies is 2–4% and 15–20%, respectively.

Clinical Considerations

Disease-associated maternal and/or embryo/fetal risk

Myocardial infarction is a medical emergency in pregnancy which can be fatal to the pregnant woman and fetus if left untreated.

Data

Animal Data

There was no evidence of maternal or developmental toxicity in any of the studies in Table 5.

Table 5 Developmental Toxicity Studies

Type of Study	Species	Dose/Exposure*	Duration/Timing Exposure
(1) Range-finding	Rat (N=30)	1, 2, 5 mg/kg/day IV (N=10 per group)	Once daily from GD 6 through LD 20
(2) Developmental Toxicity	Rat (N=66)	1, 2, 5 mg/kg/day IV (N=22 per group)	Once daily from GD 6 through GD 20
(3) Developmental Toxicity with Postweaning Evaluation	Rat (N=66)	1, 2, 5 mg/kg/day IV (N=22 per group)	Once daily from GD 6 through LD 20
(4) Range-finding (non-pregnant)	Rabbit (N=21)	1, 2, 5 mg/kg/day IV (N=7 per group)	Once daily for 14 days
(5) Range-finding (pregnant)	Rabbit (N=30)	1, 2, 5 mg/kg/day IV (N=10 per group)	Once daily from GD 7 through GD 20
(6) Developmental Toxicity	Rabbit (N=60)	1, 2, 5 mg/kg/day (N=20 per group) IV	Once daily from GD 7 through GD 20

*5 mg/kg/day is ~5 and 13 times the maximum recommended daily human dose for rat and rabbit, respectively, when compared on a body surface area basis.

8.2 Lactation

Risk Summary

There is no data on the presence of tirofiban in human milk, the effects of the drug on the breastfed infant, or the effects of the drug on human milk production. However, tirofiban is present in rat milk. The developmental and health benefits of breastfeeding should be considered along with the mother's clinical need for AGGRASTAT and any potential adverse effects on the breastfed child from AGGRASTAT or from the underlying maternal condition.

8.4 Pediatric Use

Safety and effectiveness in pediatric patients have not been established.

8.5 Geriatric Use

Of the total number of patients in controlled clinical studies of AGGRASTAT, 43% were 65 years and over, while 12% were 75 years and over. With respect to efficacy, the effect of AGGRASTAT in the elderly (≥ 65 years) appeared similar to that seen in younger patients (< 65 years). Elderly patients receiving AGGRASTAT with heparin or heparin alone had a higher incidence of bleeding complications than did younger patients, but the incremental risk of bleeding in patients treated with AGGRASTAT in combination with heparin compared to the risk in patients treated with heparin alone was similar regardless of age. No dose adjustment is recommended for the elderly population [see *Dosage and Administration (2)*].

8.6 Renal Insufficiency

Patients with moderate to severe renal insufficiency have decreased plasma clearance of AGGRASTAT. Reduce the dosage of AGGRASTAT in patients with severe renal insufficiency [see *Dosage and Administration (2.3)* and *Clinical Pharmacology (12.3)*].

Safety and efficacy of AGGRASTAT has not been established in patients on hemodialysis.

10 OVERDOSAGE

In clinical trials, inadvertent overdosage with AGGRASTAT occurred in doses up to 2 times the recommended dose for initial infusion doses. Inadvertent overdosage occurred in doses up to 9.8 times the 0.15 mcg/kg/min maintenance infusion rate.

The most frequently reported manifestation of overdosage was bleeding, primarily minor mucocutaneous bleeding events and minor bleeding at the sites of cardiac catheterization [see *Warnings and Precautions (5.1)*].

Overdosage of AGGRASTAT should be treated by assessment of the patient's clinical condition and cessation or adjustment of the drug infusion as appropriate.

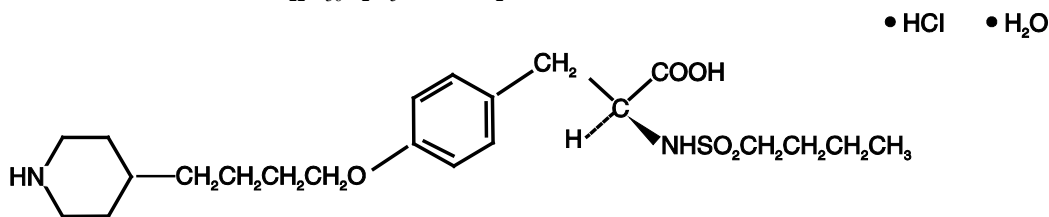
AGGRASTAT can be removed by hemodialysis.

11 DESCRIPTION

AGGRASTAT contains tirofiban hydrochloride, a non-peptide antagonist of the platelet GP IIb/IIIa receptor, which inhibits platelet aggregation.

Tirofiban hydrochloride monohydrate is chemically described as *N*-(butylsulfonyl)-*O*-[4-(4-piperidiny)butyl]-*L*-tyrosine monohydrochloride monohydrate.

Its molecular formula is $C_{22}H_{36}N_2O_5S \cdot HCl \cdot H_2O$ and its structural formula is:



Tirofiban hydrochloride monohydrate is a white to off-white, non-hygroscopic, free-flowing powder, with a molecular weight of 495.08. It is very slightly soluble in water.

AGGRASTAT Injection Premixed is supplied as a sterile solution in water for injection, for intravenous use. The pH of the solution ranges from 5.5 to 6.5 adjusted with hydrochloric acid and/or sodium hydroxide.

Each 100 mL of the premixed, isosmotic intravenous injection contains 5.618 mg tirofiban hydrochloride monohydrate equivalent to 5 mg tirofiban (50 mcg/mL) and the following inactive ingredients: 0.9 g sodium chloride, 54 mg sodium citrate dihydrate, and 3.2 mg citric acid anhydrous.

Each 250 mL of the premixed, isosmotic intravenous injection contains 14.045 mg tirofiban hydrochloride monohydrate equivalent to 12.5 mg tirofiban (50 mcg/mL) and the following inactive ingredients: 2.25 g sodium chloride, 135 mg sodium citrate dihydrate, and 8 mg citric acid anhydrous.

AGGRASTAT Injection Premixed Bolus Vial is supplied as a sterile, isosmotic, concentrated solution for intravenous bolus injection, in 15 mL vials. No dilution is required. Each 15 mL of the premixed, isosmotic intravenous injection bolus vial contains 4.215 mg of tirofiban hydrochloride monohydrate equivalent to 3.75 mg of tirofiban and the following inactive ingredients: 120 mg sodium chloride, 40.5 mg sodium citrate dihydrate, and 2.4 mg citric acid anhydrous and water for injection.

12 CLINICAL PHARMACOLOGY

12.1 Mechanism of Action

AGGRASTAT is a reversible antagonist of fibrinogen binding to the GP IIb/IIIa receptor, the major platelet surface receptor involved in platelet aggregation. When administered intravenously, AGGRASTAT inhibits *ex vivo* platelet aggregation in a dose- and concentration-dependent manner.

When given according to the PRISM-PLUS regimen of 0.4 mcg/kg/min over 30 minutes followed by a 0.1 mcg/kg/min maintenance infusion, > 90% inhibition of platelet aggregation is attained by the end of the 30-minute infusion. When given according to the recommended regimen of 25 mcg/kg followed by a 0.15 mcg/kg/min maintenance infusion, > 90% inhibition of platelet aggregation is attained within 10 minutes. Platelet aggregation inhibition is reversible following cessation of the infusion of AGGRASTAT.

12.2 Pharmacodynamics

AGGRASTAT inhibits platelet function, as demonstrated by its ability to inhibit *ex vivo* adenosine phosphate (ADP)-induced platelet aggregation and prolong bleeding time in healthy subjects and patients with coronary artery disease. The time course of inhibition parallels the plasma concentration profile of the drug.

Following discontinuation of an infusion of AGGRASTAT 0.10 mcg/kg/min, *ex vivo* platelet aggregation returns to near baseline in 4 to 8 hours in approximately 90% of patients with coronary artery disease. The addition of heparin to this regimen does not significantly alter the percentage of subjects with > 70% inhibition of platelet aggregation (IPA), but does increase the average bleeding time, as well as the number of patients with bleeding times prolonged to > 30 minutes. Similar platelet aggregation recovery rates are observed following discontinuation of a 0.15 mcg/kg/min infusion.

12.3 Pharmacokinetics

Tirofiban has a half-life of approximately 2 hours. It is cleared from the plasma largely by renal excretion, with about 65% of an administered dose appearing in urine and about 25% in feces, both largely as unchanged tirofiban. Metabolism appears to be limited.

Tirofiban is not highly bound to plasma proteins and protein binding is concentration independent over the range of 0.01 to 25 mcg/mL. The unbound fraction in human plasma is 35%. The steady state volume of distribution of tirofiban ranges from 22 to 42 liters.

In healthy subjects, the plasma clearance of tirofiban ranges from 213 to 314 mL/min. Renal clearance accounts for 39 to 69% of plasma clearance.

Specific Populations

There is no effect on clearance of tirofiban by sex, race, age, or hepatic impairment.

Renal Insufficiency

Plasma clearance of tirofiban is decreased about 40% in subjects with creatinine clearance < 60 mL/min and > 50% in patients with creatinine clearance <30 mL/min, including patients requiring hemodialysis [see *Dosage and Administration (2.3)*]. Tirofiban is removed by hemodialysis.

13 NONCLINICAL TOXICOLOGY

13.1 Carcinogenesis, Mutagenesis, Impairment of Fertility

The carcinogenic potential of AGGRASTAT has not been evaluated.

Tirofiban HCl was negative in the *in vitro* microbial mutagenesis and V-79 mammalian cell mutagenesis assays. In addition, there was no evidence of direct genotoxicity in the *in vitro* alkaline elution and *in vitro* chromosomal aberration assays. There was no induction of chromosomal aberrations in bone marrow cells of male mice after the administration of intravenous doses up to 5 mg tirofiban/kg (about 3 times the maximum recommended daily human dose when compared on a body surface area basis).

Fertility and reproductive performance were not affected in studies with male and female rats given intravenous doses of tirofiban up to 5 mg/kg/day (about 5 times the maximum recommended daily human dose when compared on a body surface area basis).

14 CLINICAL STUDIES

Two large-scale clinical studies established the efficacy of AGGRASTAT in the treatment of patients with NSTEMI-ACS (unstable angina/non-ST elevation MI). The two studies examined AGGRASTAT alone and added to heparin, prior to and after percutaneous coronary revascularization (if indicated) (PRISM-PLUS) and in comparison to heparin in a similar population (PRISM). These trials are discussed in detail below.

PRISM-PLUS (Platelet Receptor Inhibition for Ischemic Syndrome Management — Patients Limited by Unstable Signs and Symptoms)

In the double-blind PRISM-PLUS trial, 1570 patients with documented NSTEMI-ACS within 12 hours of entry into the study were randomized to AGGRASTAT (30 minute initial infusion of 0.4 mcg/kg/min followed by a maintenance infusion of 0.10 mcg/kg/min) in combination with heparin (bolus of 5,000 U followed by an infusion of 1,000 U/h titrated to maintain an activated partial thromboplastin time (APTT) of approximately 2 times control) or to heparin alone. All patients received concomitant aspirin unless contraindicated. Patients who were medically managed or who underwent revascularization procedures were studied. Patients underwent 48 hours of medical stabilization on study drug therapy, and they were to undergo angiography before 96 hours (and, if indicated, angioplasty/atherectomy, while continuing on AGGRASTAT and heparin for 12–24 hours after the procedure). AGGRASTAT and heparin could be continued for up to 108 hours. Exclusions included contraindications to anticoagulation, decompensated heart failure, platelet count < 150,000/mm³, and serum creatinine > 2.5 mg/dL. The mean age of the population was 63 years; 32% of patients were female and approximately half of the population presented with non-ST elevation myocardial infarction. On average, patients received AGGRASTAT for 71 hours.

A third group of patients was initially randomized to AGGRASTAT alone (no heparin). This arm was stopped when the group was found, at an interim look, to have greater mortality than the other two groups.

The primary endpoint of the study was a composite of refractory ischemia, new MI and death within 7 days. There was a 32% risk reduction in the overall composite primary endpoint. The components of the composite were examined separately and the results are shown in Table 6. Note that the sum of the individual components may be greater than the composite (if a patient experiences multiple component events only one event counts towards the composite).

Table 6 Primary Outcomes at 7 days in PRISM-PLUS

Endpoint	AGGRASTAT+ Heparin (N=773)	Heparin (N=797)	Risk Reduction	p-value
Death, new MI, and refractory ischemia at 7 days	12.9%	17.9%	32%	0.004
Death	1.9%	1.9%	---	---
MI	3.9%	7.0%	47%	0.006
Refractory Ischemia	9.3%	12.7%	30%	0.023

The benefit seen at 7 days was maintained over time. The risk reduction in the composite endpoint at 30 days and 6 months is shown in the Kaplan-Meier curve below.

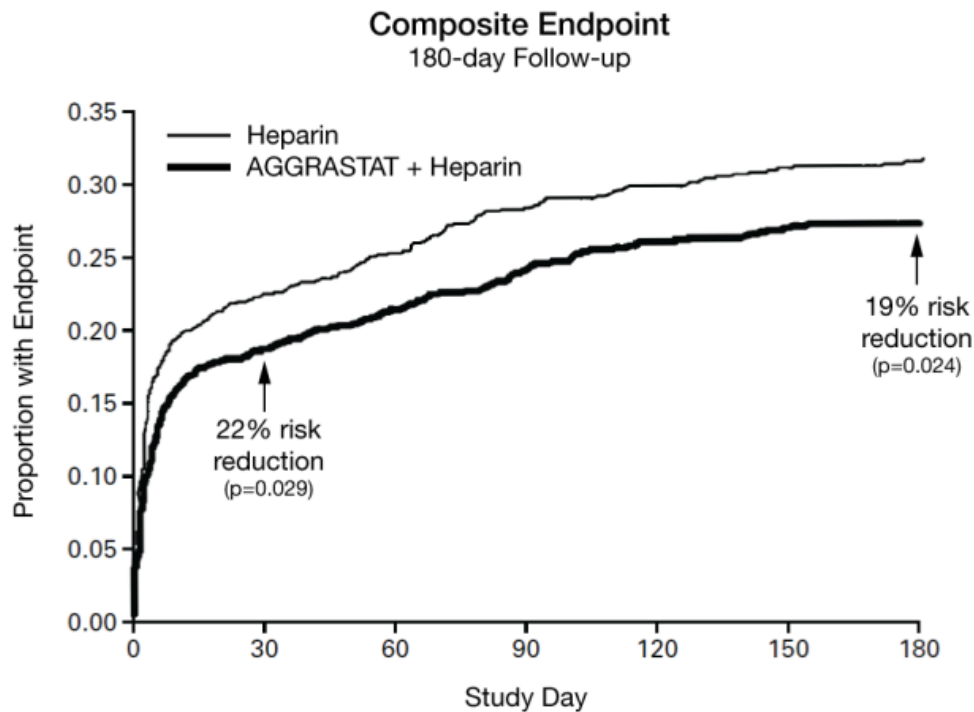


Figure 1. Time to first event of death, new MI, or refractory ischemia in PRISM-PLUS

An analysis of the results by sex suggests that women who are medically managed or who undergo subsequent percutaneous transluminal coronary angioplasty (PTCA)/atherectomy may receive less benefit from AGGRASTAT (95% confidence limits for relative risk of 0.61–1.74) than do men (0.43–0.89) ($p=0.11$). This difference may be a true treatment difference, the effect of other differences in these subgroups, or a chance occurrence.

Approximately 90% of patients in the PRISM-PLUS study underwent coronary angiography and 30% underwent angioplasty/atherectomy during the first 30 days of the study. The majority of these patients continued on study drug throughout these procedures. AGGRASTAT was continued for 12–24 hours (average 15 hours) after angioplasty/atherectomy. The effects of AGGRASTAT at Day 30 did not appear to differ among sub-populations that did or did not receive PTCA or CABG, both prior to and after the procedure.

PRISM (Platelet Receptor Inhibition for Ischemic Syndrome Management)

In the PRISM study, a randomized, parallel, double-blind study, 3232 patients with NSTEMI-ACS intended to be managed without coronary intervention were randomized to AGGRASTAT (initial dose of 0.6 mcg/kg/min for 30 minutes followed by 0.15 mcg/kg/min for 47.5 hours) or heparin (5000-unit intravenous bolus followed by an infusion of 1000 U/h for 48 hours). The mean age of the population was 62 years; 32% of the population was female and 25% had non-ST elevation MI on presentation. Thirty percent had no ECG evidence of cardiac ischemia. Exclusion criteria were similar to PRISM-PLUS. The primary endpoint was the composite endpoint of refractory ischemia, MI or death at the end of the 48-hour drug infusion. The results are shown in Table 7.

Table 7 Primary Outcomes in PRISM – Cardiac Ischemia Events

Composite Endpoint (death, MI, or refractory ischemia)	AGGRASTAT (N=1616)	Heparin (N=1616)	Risk Reduction	p-value
2 Days (end of drug infusion)	3.8%	5.6%	33%	0.015
7 Days	10.3%	11.3%	10%	0.33

In the PRISM study, no adverse effect of AGGRASTAT on mortality at either 7 or 30 days was detected. This result is different from that in the PRISM-PLUS study, where the arm that included AGGRASTAT without heparin (N=345) was dropped at an interim analysis by the Data Safety Monitoring Committee for increased mortality at 7 days.

16 HOW SUPPLIED/STORAGE AND HANDLING

AGGRASTAT is supplied as a clear, non-preserved, colorless, isosmotic, sterile premixed solution with sodium chloride for tonicity adjustment.

Table 8 AGGRASTAT Product Details

Strength	Total Amount	Packaging	NDC #
50 mcg/mL	12.5 mg/250 mL	bag	25208-002-02
50 mcg/mL	5 mg/100 mL	bag	25208-002-01
50 mcg/mL	5 mg/100 mL	vial	25208-002-03
250 mcg/mL	3.75 mg/15 mL	bolus vial	25208-001-04

FOR INTRAVENOUS USE ONLY

Store AGGRASTAT at controlled room temperature, 25 °C (77 °F) with excursions permitted between 15–30 °C (59–86 °F) [see USP Controlled Room Temperature]. Do not freeze. Protect from light during storage.

17 PATIENT COUNSELING INFORMATION

Advise patients to watch closely for any signs of bleeding or bruising and to report these to their health care provider when they occur.

Advise patients to discuss with their health care provider their use of any other medications, including over-the-counter or herbal products prior to AGGRASTAT use.

Patent: www.medicure.com/aggrastat/patents

AGGRASTAT is manufactured for:
MEDICURE INTERNATIONAL, INC.

by:

EMERGENT BIOSOLUTIONS
Baltimore, Maryland 21230 USA

And

LABORATORIOS GRIFOLS S.A
08150 Parets del Vallès (Barcelona), Spain

Distributed by:



MEDICURE PHARMA, INC.
Princeton, NJ 08540 USA
1-800-509-0544

PIM-10

* Registered trademark of Medicure International, Inc.

© 2020

Copyright used under license.
All rights reserved.